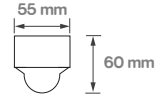
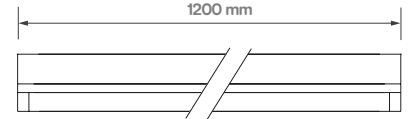
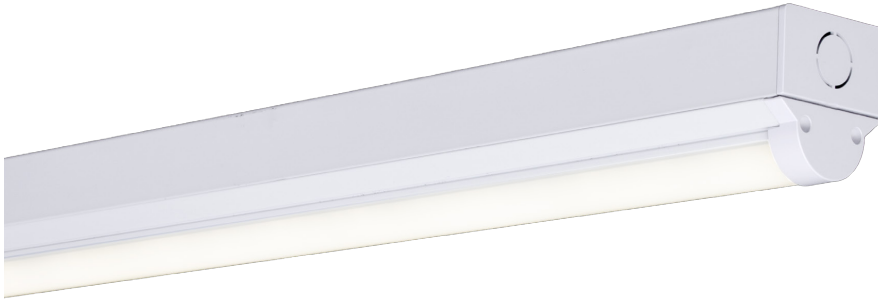
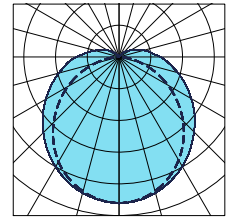


WELLINGTON RANGE



powered by
TRIDONIC



IP20
 IK04
 L70/B50
50,000 hrs

The Wellington LED batten luminaire has been meticulously crafted to meet the highest standards of specifications and energy-saving requirements. It features Tridonic LED boards and driver, polycarbonate diffuser and an aluminium housing complete with standard BESA and conduit mounting points on the rear.

Supplied as CRI 80 as standard, with a high colour stability of 4 MacAdam steps, the Wellington is available with a range of control options including a batten fit PIR and corridor function. The emergency range of the Wellington emergency versions are fitted with the latest lithium iron phosphate LiFePO4 battery technology, which has a 3-year battery warranty.

The Wellington range seamlessly integrates with Trojan's standard options, offering choices such as dimmable functionality and emergency configurations. Additionally, these luminaires can be seamlessly integrated into our intelligent lighting systems through wireless options, ushering in a new era of versatile illumination solutions.

| Part code | Power W | Output lm | Length mm | Efficacy lm/W | CCT K | CRI (Ra) | Weight kg |
|---------------|------------|--------------|--------------|------------------|----------|-------------|--------------|
| TLWEL/3300/4K | 27 | 3300 | 1200 | 124 | 4000 | 80 | 1.0 |

DD = DALI Dimmable
E = Emergency
CF = Corridor Function

SD = SwitchDim
ST = Self Test Emergency
PIR = Sensor On/Off

MD = Mymesh Dim
ME = Mymesh Emergency

CD = Casambi Dim
SL** = Slave