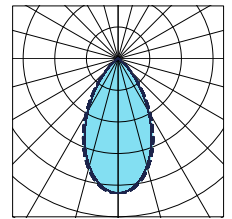
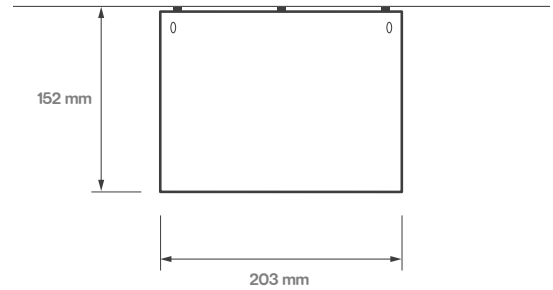


# EASTLEIGH RANGE



 IP20
  IK04
  L70/B50  
 50,000 hrs

The Eastleigh range incorporates a powder-coated aluminium spun body with a 60 degree satin etched reflector and fitted with high efficient LED components as standard, with a range of accessories available.

Supplied as CRI 80 as standard, with a high colour stability of 3 MacAdam steps, the Eastleigh is available in a black, white or grey finish and 3000K warm white or 4000K cool white colour temperatures and along with a range of control options. The emergency range of the Eastleigh are fitted with the latest lithium iron phosphate LiFePO4 battery technology, which has a 3-year battery warranty.

The Eastleigh range seamlessly integrates with Trojan's standard options, offering choices such as dimmable functionality and emergency configurations. Additionally, these luminaires can be seamlessly integrated into our intelligent lighting systems through wireless options, ushering in a new era of versatile illumination solutions.

Part code	Power W	Output lm	Efficacy lm/W	CCT K	CRI	Weight kg
TLEAST/1000/3K	10	1080	114	3000	80	0.9
TLEAST/1000/4K	10	1150	121	4000	80	0.9
TLEAST/2000/3K	18	1950	111	3000	80	0.9
TLEAST/2000/4K	18	2050	117	4000	80	0.9
TLEAST/3000/3K	27	2950	109	3000	80	0.9
TLEAST/3000/4K	27	3150	117	4000	80	0.9

DD = DALI Dimmable  
 E = Emergency  
 BL = Black finish

SD = SwitchDim  
 ST = Self Test Emergency  
 WH = White finish

MD = Mymesh Dim  
 ME = Mymesh Emergency  
 GR = Grey finish

CD = Casambi Dim  
 SL\*\* = Slave  
 SUS = Suspension Kit

## Options



**/GY**  
Grey finish - RAL 9006



**/BK**  
Black finish - RAL 9005



**/SP40**  
40° Specular Reflector



**/MF50**  
50° Multi-faceted Reflector

## Accessories

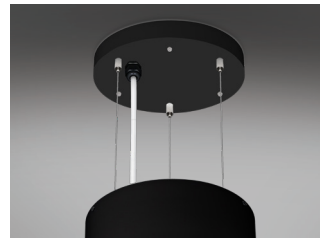
(factory fit only)



**/SUS**  
2 m suspension kit in white



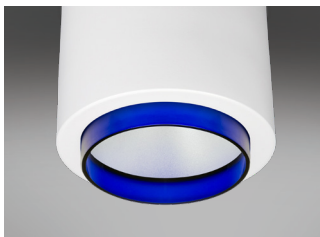
**/SUS**  
2 m suspension kit in grey



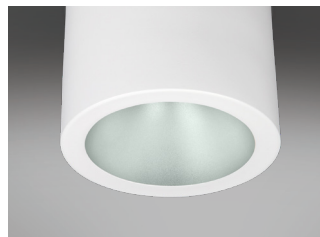
**/SUS**  
2 m suspension kit in black



**TA310/FROST**  
Frosted vertical halo



**TA310/BLUE**  
Blue vertical halo



**TA340**  
Clear glass



**TA341**  
Centre etched glass



**TA342**  
Fully etched glass



**TA343**  
Clear polycarbonate



**TA344**  
Opal polycarbonate