



IP20



IK02



L90/B10
60,000 hrs

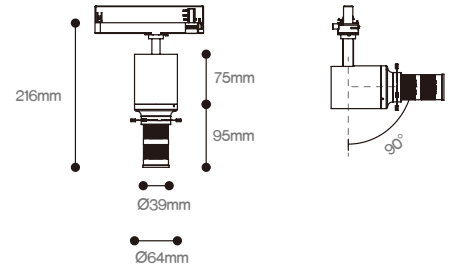
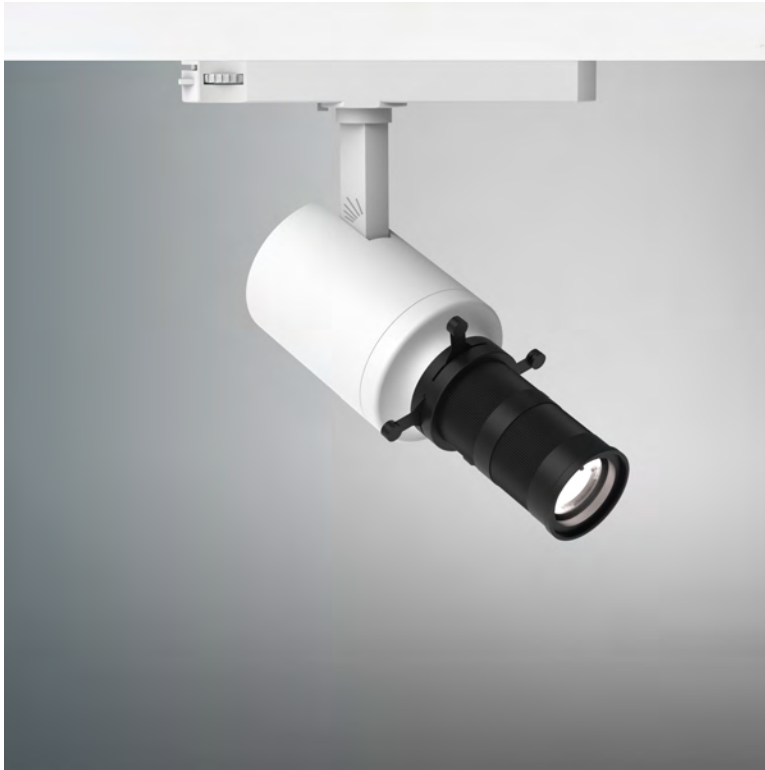
powered by
TRIDONIC

The Poplar Range incorporates a gobo style projector in a track mounted spotlight, powered by the latest in-track driver technology and high efficiency LED module. Custom made lens to suit any project are available on request.

The Poplar range seamlessly integrates with Trojan's standard options, offering choices such as dimmable functionality and emergency configurations. Additionally, these luminaires can be seamlessly integrated into our intelligent lighting systems through wireless options, ushering in a new era of versatile illumination solutions.

Application: Residential, shopping mall, shop, hotel room, restaurant & bar, museum, art gallery, showroom, office.

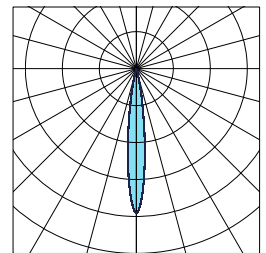
POPLAR FRAME 12



powered by
TRIDONIC

Colours :  
Black White

Beam Angle : 20° - 30°



Part code	Power W	Output lm	Efficacy lm/W	CCT K	CRI Ra	Weight kg
TLPOP/F12/80/3K	12	491	41	3000	80	0.8
TLPOP/F12/80/4K	12	518	43	4000	80	0.8
TLPOP/F12/90/3K	12	418	35	3000	90	0.8
TLPOP/F12/90/4K	12	440	37	4000	90	0.8

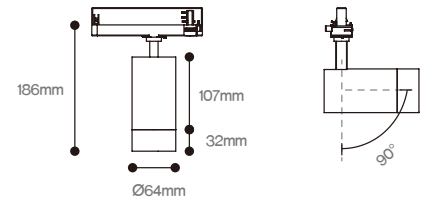
BH = Black Housing
SD = Switch Dim

WH = White Housing
CD = Casambi Dim

TW = Tuneable White
MD = Mymesh Dim

DD = DALI Dimmable

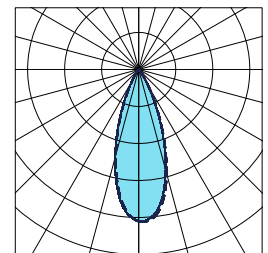
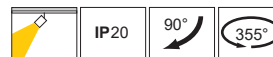
POPLAR 25



powered by
TRIDONIC

Colours :  
Black White

Beam Angle : 15°/24°/36°/50°



Part code	Power W	Output lm	Efficacy lm/W	CCT K	CRI Ra	Weight kg
TLPOP/25/80/3K	25	2878	115	3000	80	0.8
TLPOP/25/80/4K	25	3008	120	4000	80	0.8
TLPOP/25/90/3K	25	2429	97	3000	90	0.8
TLPOP/25/90/4K	25	2557	102	4000	90	0.8

BH = Black Housing

WH = White Housing

15D = 15° Lens

24D = 24° Lens

36D = 36° Lens

50D = 50° Lens

TW = Tuneable White

DD = DALI Dimmable

SD = Switch Dim

CD = Casambi Dim

MD = Mymesh Dim